

**FK FUKU 福客®**

**FK-30T**

**FUKE**

Boutique Manufacturing,

Conquer The World with Quality

**BEST  
CHOICE**

\*\*\*\*\*



[www.fukeonline.com](http://www.fukeonline.com) [fk002@fukebn.com](mailto:fk002@fukebn.com)

Maximum rated total lifting capacity

**30T**

Maximum gradeability

**49%**

Total weight

**34490kg**

### Main action parameters

Main winch	Single rope speed 0-145m/min, diameter/length 16mm, maximum single rope pulling force 4.5t
Vice winch	Single rope speed 0-145m/min, diameter/length 16mm, maximum single rope pulling force 4.5t
Turn around	0-2.5 r/min
Fluctuation range	35s/50s
Stretch	270/260



Contact us:

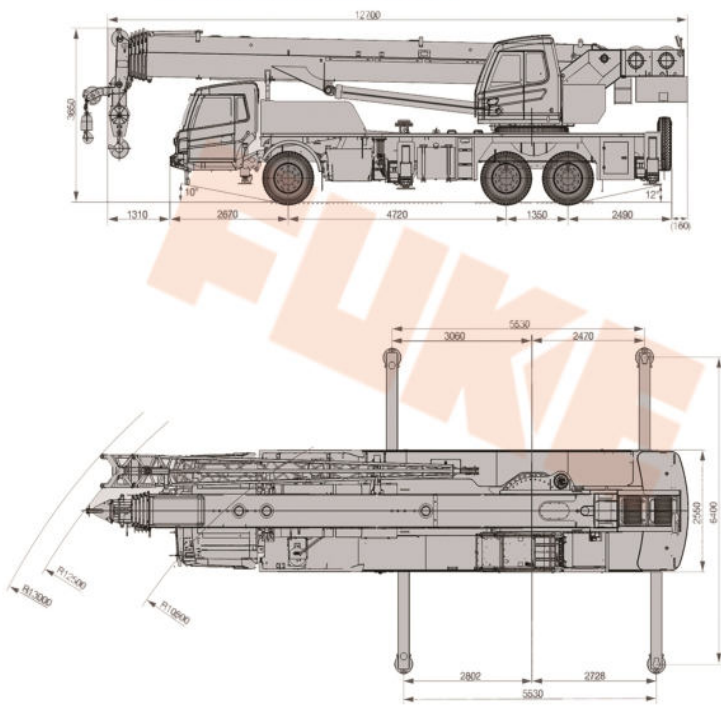
Phone/Whatsapp:+8613505697380

Email:fk002@fukebn.com/fuke7380@gmail.com

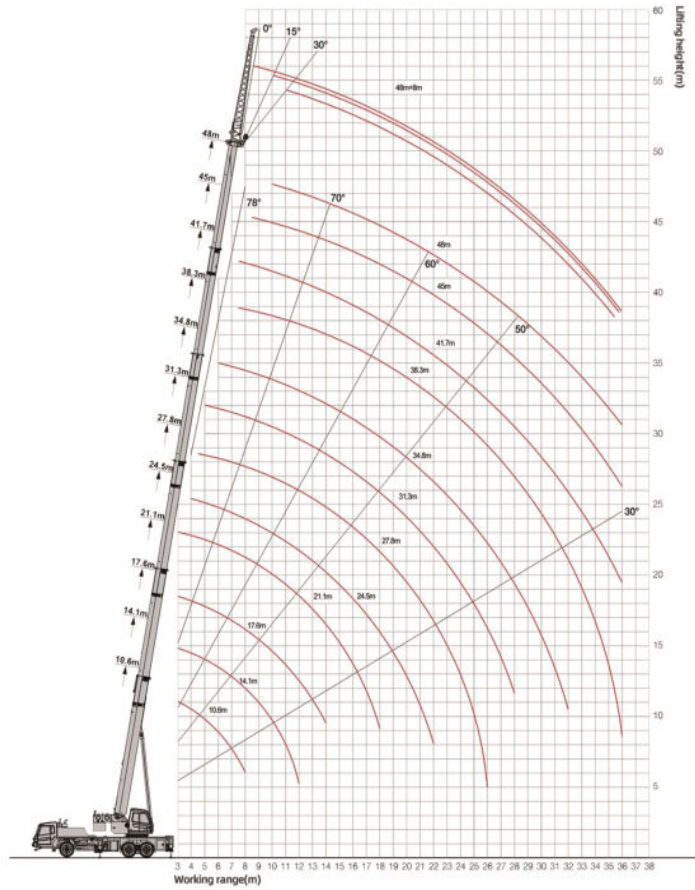
**FUKE**

Anhui Fuke Heavy Industry Equipment Co., Ltd.

## Crane dimensions



## Lifting height curve of main and jib



## Main technical parameters

Overall length * width * height	12700*2550*3650 mm
Wheelbase	4720 mm
Engine model	Yuchai
Engine rated output power	228/1900 Kw/rpm
Engine maximum output torque	1500/(1000-1400) N.m/rpm
Total mass of the whole machine	34490 kg
Maximum travel speed	90km/h
Minimum turning diameter	10.5 m
Minimum ground clearance	250 mm
Approach angle	10°
Departure angle	12°
Braking distance (vehicle speed is 30km/h)	≤10 m
Maximum grade	49%
Fuel consumption per hundred kilometers	32 L
Maximum rated total lifting capacity	30 t
Minimum rated range	3 m
Maximum lifting moment	1331/755 kN.m
Outrigger span (horizontal x longitudinal)	5.53x6.4 m
Lifting height (Basic boom/longest main boom)	11/48.5 m
Boom length(Basic boom/longest main boom)	10.6/48 m
Maximum speed of single rope of main winch (no load)	145 m/min
Boom fully extended/retracted time	270/260 s
Full lifting/falling time of boom	35/50 s
Swing speed	0-2.5 r/min
Horizontal outrigger full extension/retraction time	25/30 s
Vertical outrigger full retract/release time	20/25 s

## Main boom performance table

Amplitude (m)	10.60	14.08	17.56	21.05	24.47	27.80	31.29	34.77	38.25	41.68	45.01	48.00
3	3000	3000	3000	3000								
3.5	3000	3000	3000	3000	3000							
4	3000	3000	3000	3000	3000							
4.5	3000	2960	2930	2950	3000	2620						
5	2716	2716	2700	2690	2720	2500	1750					
5.5	2469	2469	2470	2470	2470	2340	1640					
6	2264	2264	2260	2260	2260	2230	1530	1500				
6.5	2089	2089	2089	2089	2089	2089	1460	1400	1300			
7	1940	1940	1940	1940	1940	1940	1370	1310	1170			
7.5	1811	1811	1811	1811	1811	1811	1330	1270	1130	1000		
8	1677	1698	1698	1674	1698	1698	1270	1190	1080	970		
9		1431	1445	1470	1473	1439	1170	1100	990	910	820	
10		1201	1214	1258	1241	1209	1080	1010	920	840	760	760
12		888	939	941	925	900	922	860	790	720	680	630
14			729	731	714	741	711	660	660	640	590	550
16				583	565	591	562	575	540	530	530	470
18				471	474	481	470	470	467	430	440	410
20					388	403	400	406	383	375	358	370
22					323	358	350	340	329	309	293	302
24						304	302	288	276	256	240	248
26						261	257	244	233	213	197	204
28							220	206	197	177	160	167
30								175	166	146	129	135
32								148	137	120	103	108
34									114	95	79	84
36									94	75	59	63
Magnification	8	8	8	8	7	6	5	4	3	3	3	3

\*We follows the principle of continuous improvement Product performance parameters will be partially changed due to technical improvements without prior notice.

