

**Boutique Manufacturing
Conquer the word with Quality**

FK-983G



Basic Configuration

Bucket capacity

3m³

Operation weight

17600kg

Rated load

6000kg

Wheel base

3668mm

*We follows the principle of continuous improvement Product performance parameters will be partially changed due to technical improvements without prior notice.

Anhui Fuke Heavy Industry Equipment Co., Ltd.

Web: www.fukeonline.com

Basic Parameters

Engine model: Yuchai

Rated power (kW): 129

Tyre model: 17.5-25

Bucket capacity (m³): 3

Rated load (T): 6

Operating weight (T): 17.6

Min. turning radius (mm): 6800

Speed (km/h): 0-30

Forward gear (km/h): I gear 0-9 II gear 0-30

Reverse gear (km/h): 0-12

Max. climbing gradient: 16°

Overall length: 8250

Overall width: 2100

Overall height: 2320

Min. ground clearance (mm): 305

Wheel base (mm): 3668

Max. dumping height (mm): 1870

Dumping reach (mm): 1750

Reliable structure

Excellent efficiency

Booster

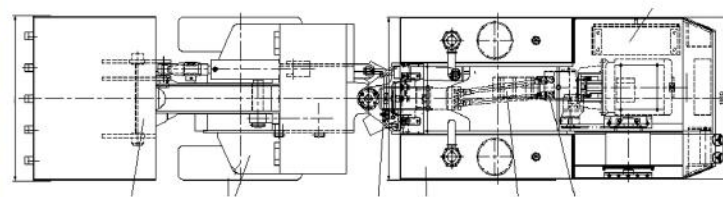
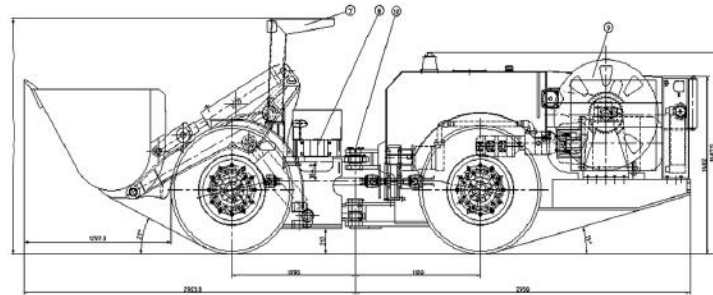
Protective Device

GPS positioning

On-board repair tools

CD Player

Loader Outline



Structure Workshop

FUKE 福客

结构车间



*We follows the principle of continuous improvement Product performance parameters will be partially changed due to technical improvements without prior notice.

Contact us:

Sun Xianfeng - Phone/Whatsapp:+8613505697380 |

Email:fk002@fukebn.com/fuke7380@gmail.com |

Mr.Zhang - Phone/Whatsapp:+8613291848418 | Email:zh@fukebn.com

Web:

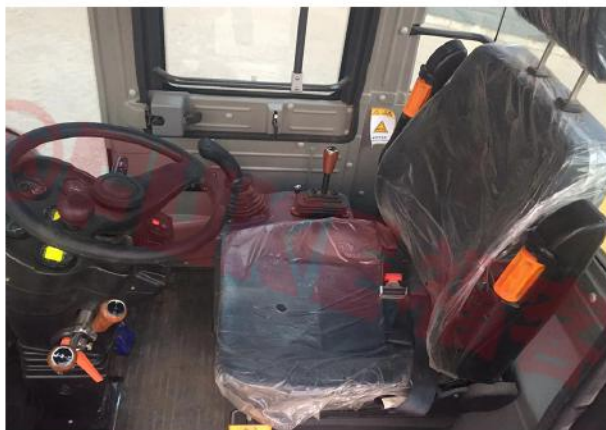
www.fukeonline.com



Type 1 Mechanical Operating System



Type 2 Pilot Operating System



Type 3 Advanced Operating Systems

(Pilot and Image Operating Systems)



*We follows the principle of continuous improvement Product performance parameters will be partially changed due to technical improvements without prior notice.

Contact us:

Sun Xianfeng - Phone/Whatsapp:+8613505697380 |

Email:fk002@fukebn.com/fuke7380@gmail.com |

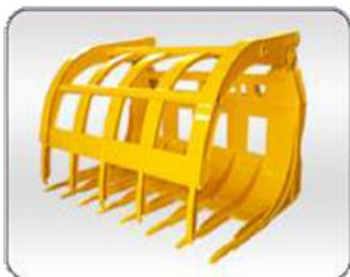
Mr.Zhang - Phone/Whatsapp:+8613291848418 | Email:zh@fukebn.com

Web:
www.fukeonline.com

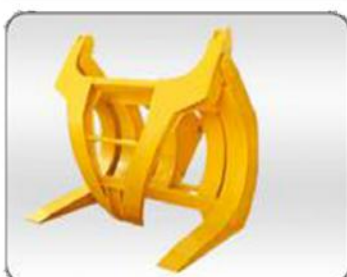


Loader accessories

▼ Grass cutter



▼ Clamping machine



▼ Sliding fork



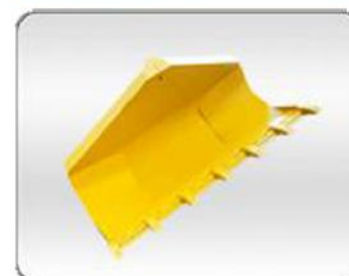
▼ Flat fork



▼ Coal scuttle



▼ Side dump



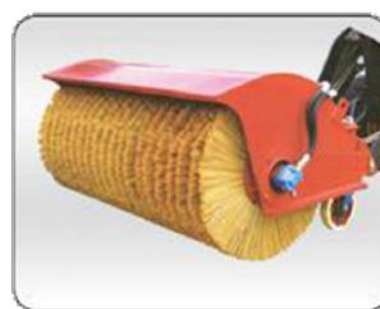
▼ Rock bucket



▼ Breaker



▼ Snowplow



▼ Snow shovel



▼ Quick change tooling



*We follow the principle of continuous improvement. Product performance parameters will be partially changed due to technical improvements without prior notice.

Contact us:

Sun Xianfeng - Phone/Whatsapp: +8613505697380 |

Email: fk002@fukebn.com / fuke7380@gmail.com |

Mr. Zhang - Phone/Whatsapp: +8613291848418 | Email: zh@fukebn.com

Web:

www.fukeonline.com

